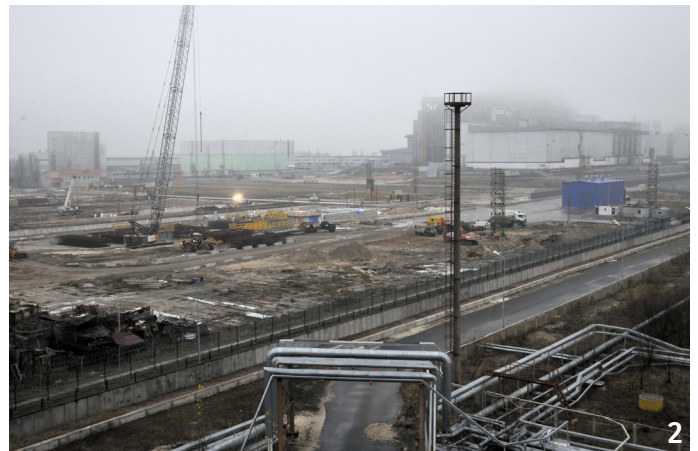


PORTFOLIO



1
Early 2010: Clearing and cleaning the assembly area.



2
August 2010: Earthworks in the assembly area for the concrete longitudinal footers that will support the arch and allow it to be pushed over the damaged reactor. - ©Francis Vigouroux



3
August 2010: Start on the foundations for the lifting towers. - ©Francis Vigouroux



4
August 2010: Driving the metal piles for the longitudinal beams in the assembly area.



5
September 2011: Start on assembly preparatory work.



6
September 2011: Installation of the longitudinal beams in the assembly area.



7
September 2011: Installation of the longitudinal beams in the assembly area. - @Francis Vigouroux



8
September 2011: Installation of the longitudinal beams in the assembly area. - @Francis Vigouroux



9
February 2012: Assembly test at the Cimolai plant in Italy.



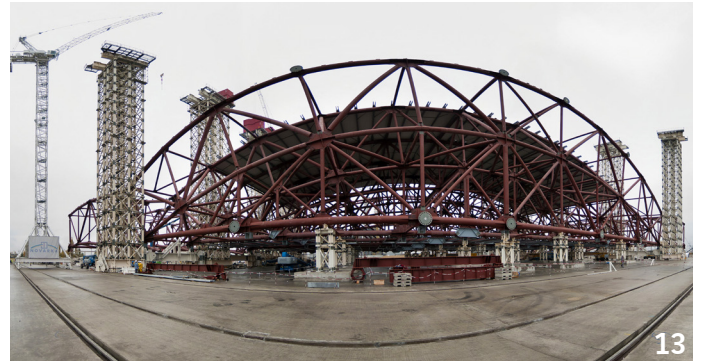
10
February 2012: Assembly test at the Cimolai plant in Italy.



11
April 2012: Delivery of the first arch components on site and start on the frame assembly.



October 2012: Assembly continues.



October 2012: Assembly continues. - @Guillaume Daveau



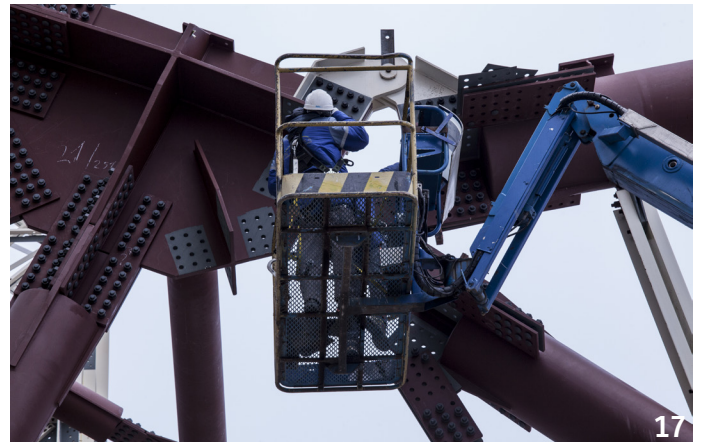
October 2012: The cladding starts with the installation of the purlins and complex wall system. - @Guillaume Daveau



November 2012: First arch lifting operation. - @Jean-Yves Govin Sorel



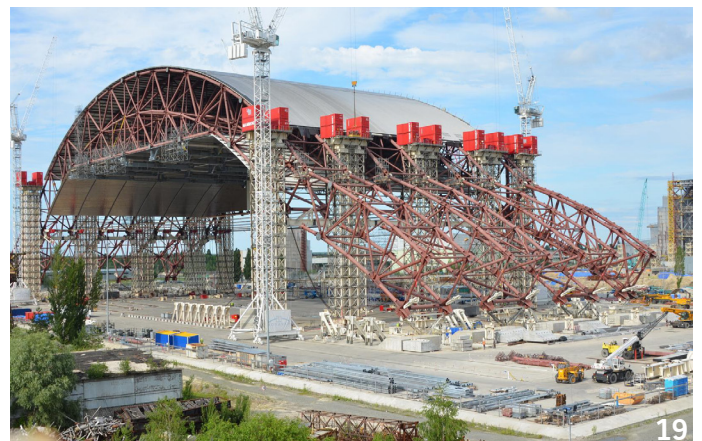
November 2012: First arch lifting operation. - @Jean-Yves Govin Sorel



November 2012: First arch lifting operation. - @Jean-Yves Govin Sorel



November 2012: Controlled lifting from an operation room.
@Jean-Yves Govin Sorel



June 2013: Second lifting operation.



September 2013: Third lifting operation for the first half of the arch.



April 2014: First half of the arch pushed to the waiting position (4) and first lifting operation for the second half.



April 2014: First concrete poured for the foundations of the Technological Building and auxiliary buildings. - ©Francis Vigouroux



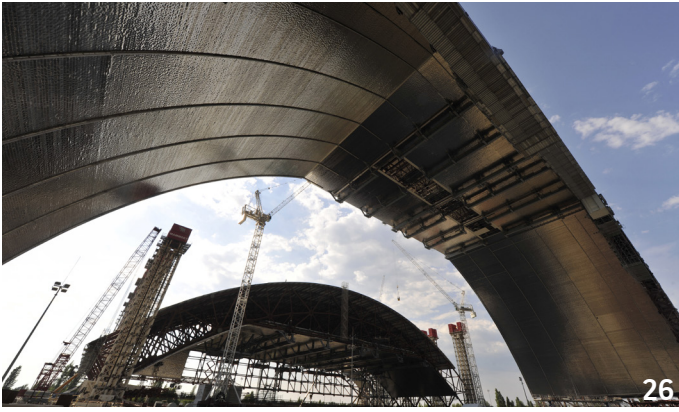
April 2014: First concrete poured for the foundations of the Technological Building and auxiliary buildings. - ©Francis Vigouroux



August 2014: Second lifting operation for the second half of the arch. ©Francis Vigouroux



August 2014: Second lifting operation for the second half of the arch. - ©Francis Vigouroux



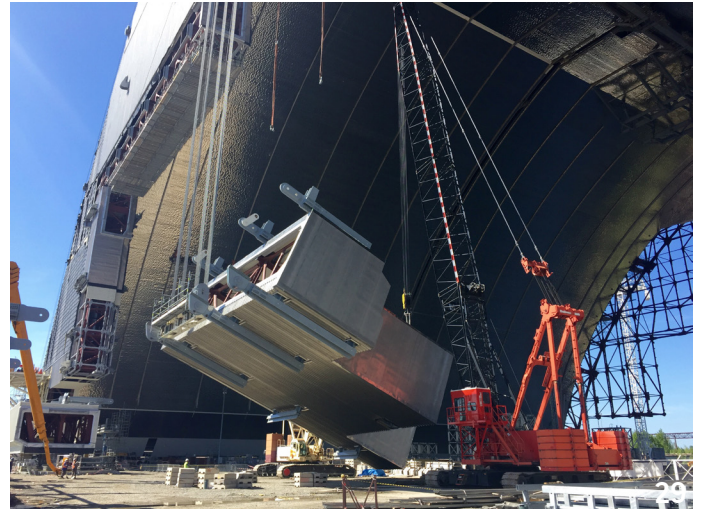
August 2014: Second lifting operation for the second half of the arch.
©Francis Vigouroux



October 2014: Third and final lifting operation for the second half of the arch.



May 2015: Five million accident-free hours worked.



May 2015: Lifting one of the tilting panels.



June 2015: Work starts on the electrical and ventilation systems inside the arch. - ©Francis Vigouroux



October 2015: Interconnection of the two halves of the arch.



November 2015: Lifting the first overhead bridge cranes inside the arch.
©Francis Vigouroux

Press contacts:



VINCI Press Office
+33 1 47 16 31 82
media.relations@vinci.com



Mathieu Carré
+ 33 1 30 60 66 39
m.carre@bouygues-construction.com